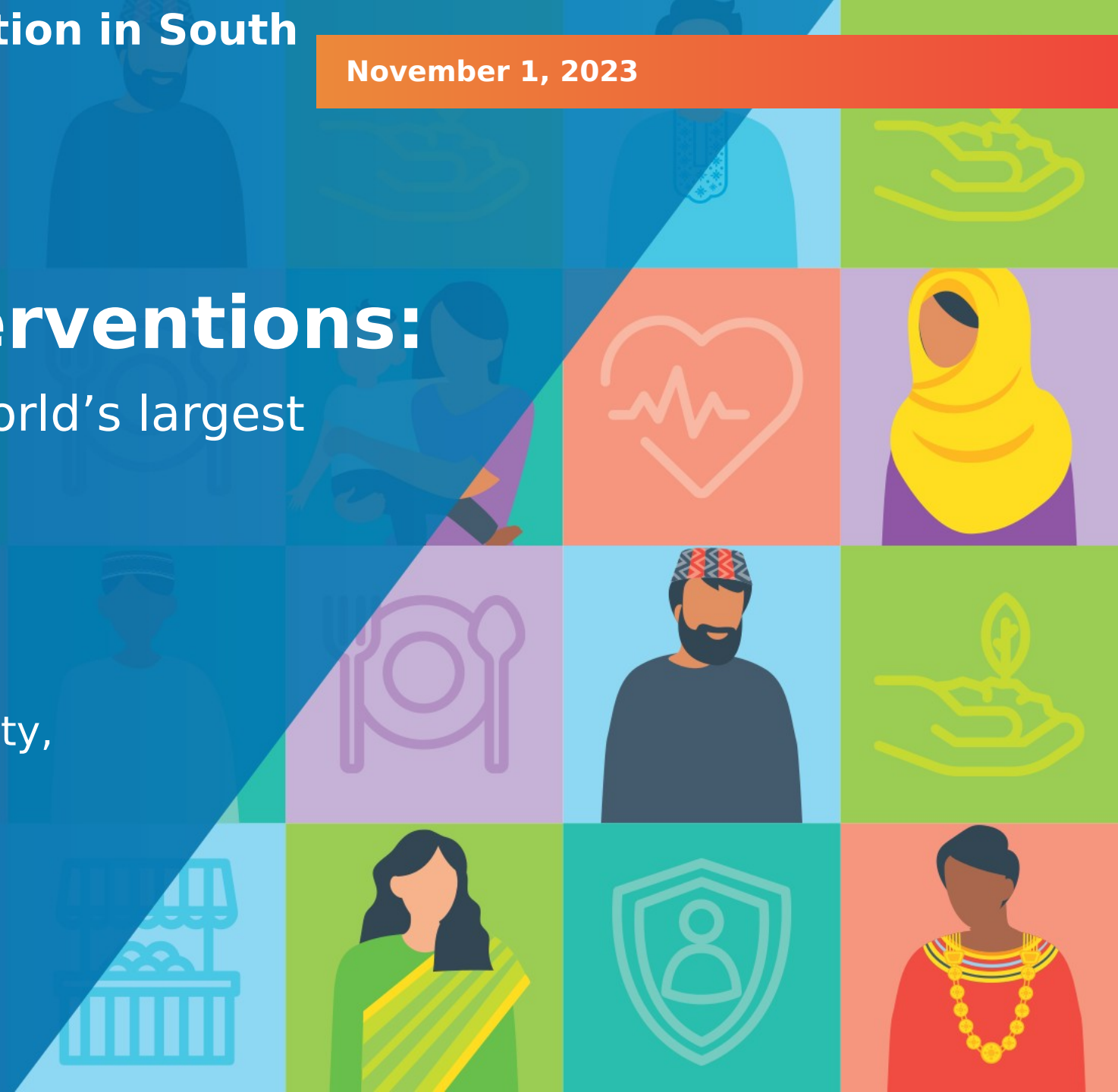


Mobile Health Interventions:

A Policymaker's note on the World's largest Nutrition Surveillance in India

Sumantra Pal
Economic Adviser | Visiting Research Fellow
Government of India | Leeds University,
UK



Mobile Health Interventions: A Policymaker's note on the World's largest Nutrition Surveillance in India

Overview

1. The program

ICDS-CAS (Common Application Software)
mHealth + Nutrition — Knowledge + Behaviour

2. The context

11 states

46 CAS + 78 Non-CAS = 124 Districts

519 ICDS projects—745 AWCs—1100 pregnant + 3300 lactating = 3300 women

3. Interventions

Knowledge: info./msg/counsel, MCP, ANC, Health check, Home visits, VHSND, Comm. Events.

Behaviour: info./msg./counsel., MCP, ANC, Health check, Health edu., Home visits, Growth monitor., Immunization, VHSND, Comm. Events, Tell nutria. Status.

4. Outcome

Knowledge + Behavior of Pregnant Women

Behaviour of lactating women

Identification strategy

1. Specification

(C1) CAS =1, Non-CAS = 0

(C2) Intervention received = 1, Intervention not received = 0

Control variables + Fixed effects + cluster-robust standard errors

2. Two-way Fixed Effects

Knowledge outcomes = C1 +C2 + C1xC2 + controls + FE+ residuals

Behaviour outcomes = C1 +C2 + C1xC2 + controls + FE+ residuals

3. Estimating Equation

$$y_{ircawd} = \alpha_0 + \alpha_1 C_d + \alpha_2 T_i + \beta C_d T_i + A_r + B_c + E_w + \gamma X_i + \varepsilon_{ircawd}$$

Results

1. Behavior of pregnant women

CAS+Info/msg/counsel + 33** pp on reco. 100 IFA

2. Behavior of lactating women

CAS+VHND +9* pp on reco. 100 IFA

Results 1: Pregnant women's behavior

+ 33pp due to info/msg/counsel. in CAS districts

Table 2: Effects of information/messages/counselling on nutrition received on Pregnant Women's

Dependent variables	Knowledge of			Behaviour on		
	recommended IFA for 100 days	recommended 4 ANC visits	recommended Breastfeeding within 1hr of delivery	timely 1st ANC visit	at least 4 ANC visits during pregnancy	at least 100 IFA taken
	(1)	(2)	(3)	(4)	(5)	(6)
ICDS-CAS implemented	-0.175 (0.196)	-0.030 (0.109)	0.119 (0.239)	-0.176*** (0.047)	-0.160* (0.089)	-0.145 (0.094)
Information/messages/counselling received	-0.308** (0.151)	0.054 (0.116)	-0.103 (0.131)	0.051 (0.114)	-0.080 (0.122)	-0.218 (0.138)
ICDS-CAS implemented X Information/messages/counselling received	0.247 (0.195)	-0.087 (0.163)	0.016 (0.160)	-0.105 (0.135)	0.104 (0.171)	0.334** (0.163)
Observations	814	970	759	973	973	1,032
R-squared	0.653	0.651	0.648	0.569	0.572	0.546
mean (dependent variable)	0.518	0.495	0.775	0.941	0.387	0.320

Notes: Standard errors clustered at the Anganwadi Centre levels in parenthesis. An observation is currently pregnant woman. Additional control variables included but the estimates are not presented: respondent's current age, age at marriage, highest educational attainments, below poverty line status, number of living children, number of children younger than 24 months. Fixed effects for religion(s), social categories (SC/ST/OBC/General), and ICDS project(s) are applied. Data source: World Bank's Telephonic Survey on Poshan Knowledge and Behavior. *** p<0.01, ** p<0.05, * p<0.1.

Results 2: Lactating mothers' behavior

+ 9pp due to attendance at VHND in CAS districts

Table 3b: Effects of Attendance at Village Health and Nutrition Day/Village Health Sanitation and Nutrition Day on Lactating Women's

Dependent variables	Behaviour on					
	timeliness of 1st ANC visit (within 16wks)	recommended ANC visits at least 4	recommended IFA at least 4	ever Breastfed 100	immediate/wit hin Breastfeeding (until 6mo)	exclusiv e 1hr Breastfeeding (until 6mo)
	(1)	(2)	(3)	(4)	(5)	(6)
ICDS-CAS implemented	0.095 (0.087)	0.327* (0.190)	0.108 (0.084)	-0.011 (0.014)	-0.029 (0.035)	-0.302*** (0.095)
Attendance as VHND/VHSND	-0.015 (0.040)	-0.037 (0.054)	-0.024 (0.052)	0.004 (0.010)	0.038 (0.046)	-0.016 (0.059)
ICDS-CAS implemented X Attendance at VHND/VHSND	0.042 (0.044)	0.070 (0.061)	0.099* (0.060)	0.001 (0.011)	0.029 (0.054)	0.070 (0.067)
Observations	2,998	2,995	3,012	3,120	3,064	3,064
R-squared	0.334	0.454	0.394	0.142	0.251	0.194
mean (dependent variable)	0.898	0.620	0.552	0.980	0.698	0.443

Notes : Standard errors clustered at the Anganwadi Centre levels in parenthesis. An observation is lactating woman with children below 6 months/Women with children below 2 years. Additional control variables included but the estimates are not presented: respondent's current age, age at marriage, highest educational attainments, below poverty line status, number of living children, number of children younger than 24 months. Fixed effects for religion(s), social categories (SC/ST/OBC/General), and ICDS project(s) are applied. Data source: World Bank's Telephonic Survey on Poshan Knowledge and Behavior. *** p<0.01, ** p<0.05, * p<0.1.

Identifying assumption

The sampling strategy

