

Improvement in child diet diversity through women's collective at scale in Bihar

Dr. Rakesh Jha¹ & Apollo Purty²

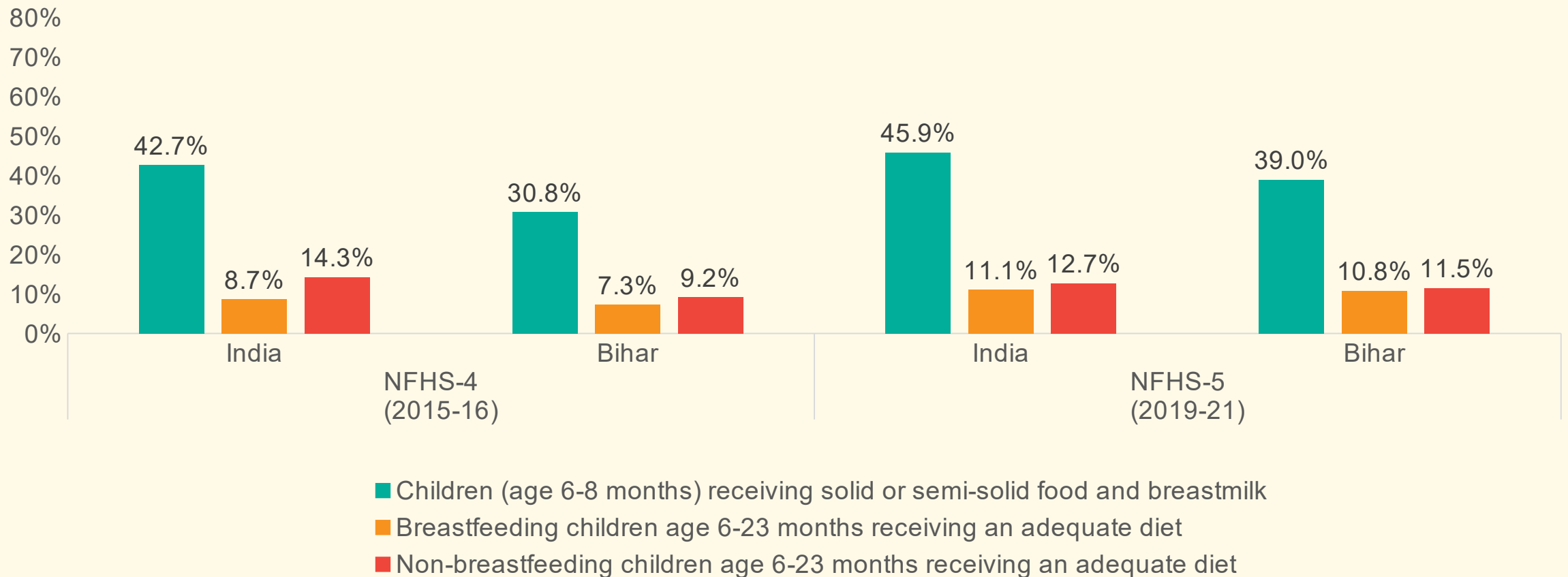
¹ Project Concern International, India &
² JEEVIKA, Bihar





Nutrition Status of children

Complementary Feeding – Rational of Interventions *(values in %)*

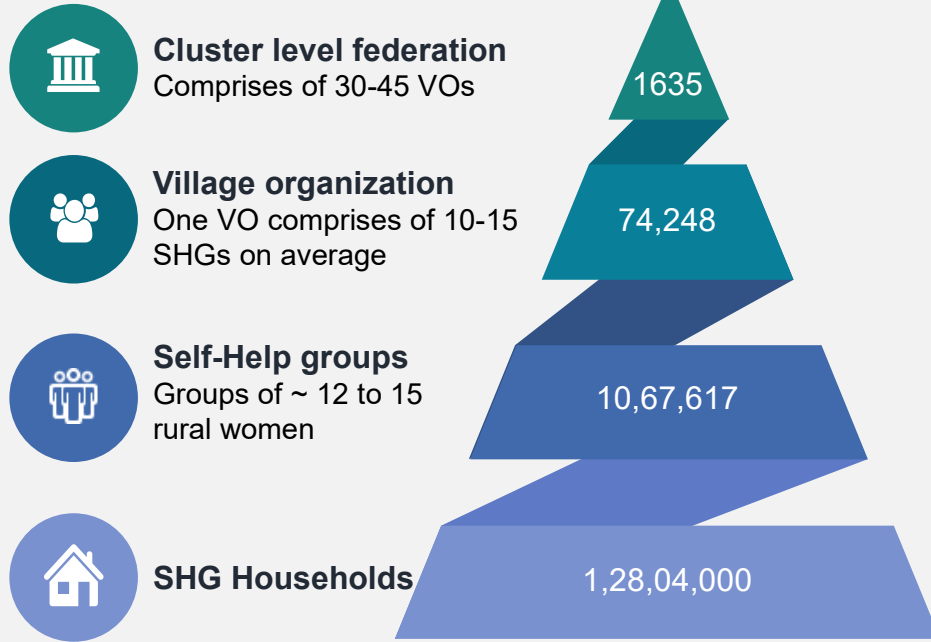


Women's Collectives

10.67 Lakh SHGs

Reach: 1,28,04,000 households

JEEVIKA Nurtured COMMUNITY BASED ORGANIZATIONS



Cluster level federation
Comprises of 30-45 VOs



Village organization
One VO comprises of 10-15 SHGs on average

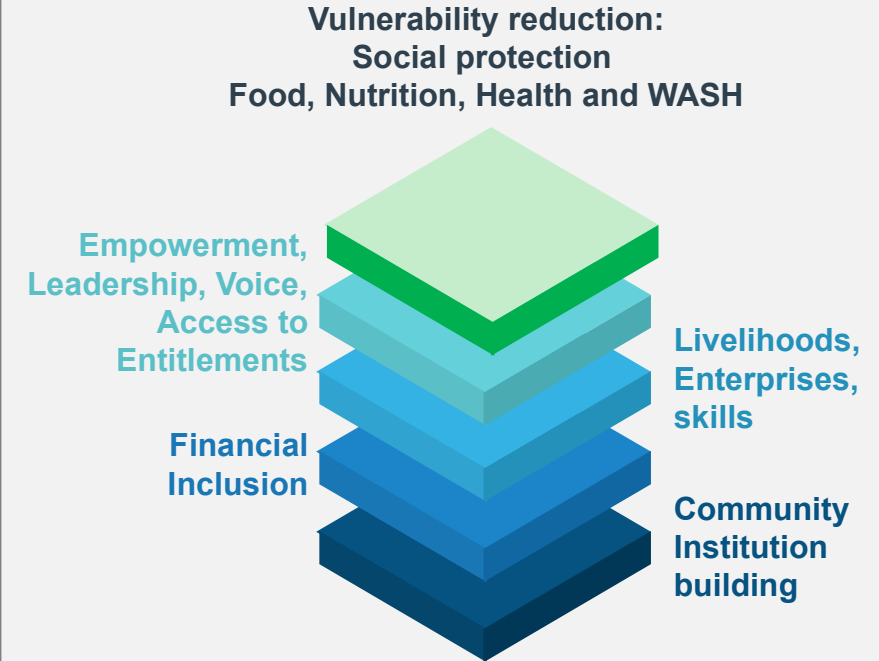


Self-Help groups
Groups of ~ 12 to 15 rural women



SHG Households
1,28,04,000

Integration of Health and Nutrition in SHGs finds a symbiotic fit with reduction of poverty



Operations



Financial Inclusion



Institution Building & Capacity Building



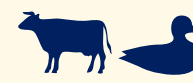
Livelihoods-Farm



Health, Nutrition & Sanitation



Non-Farm



Livestock

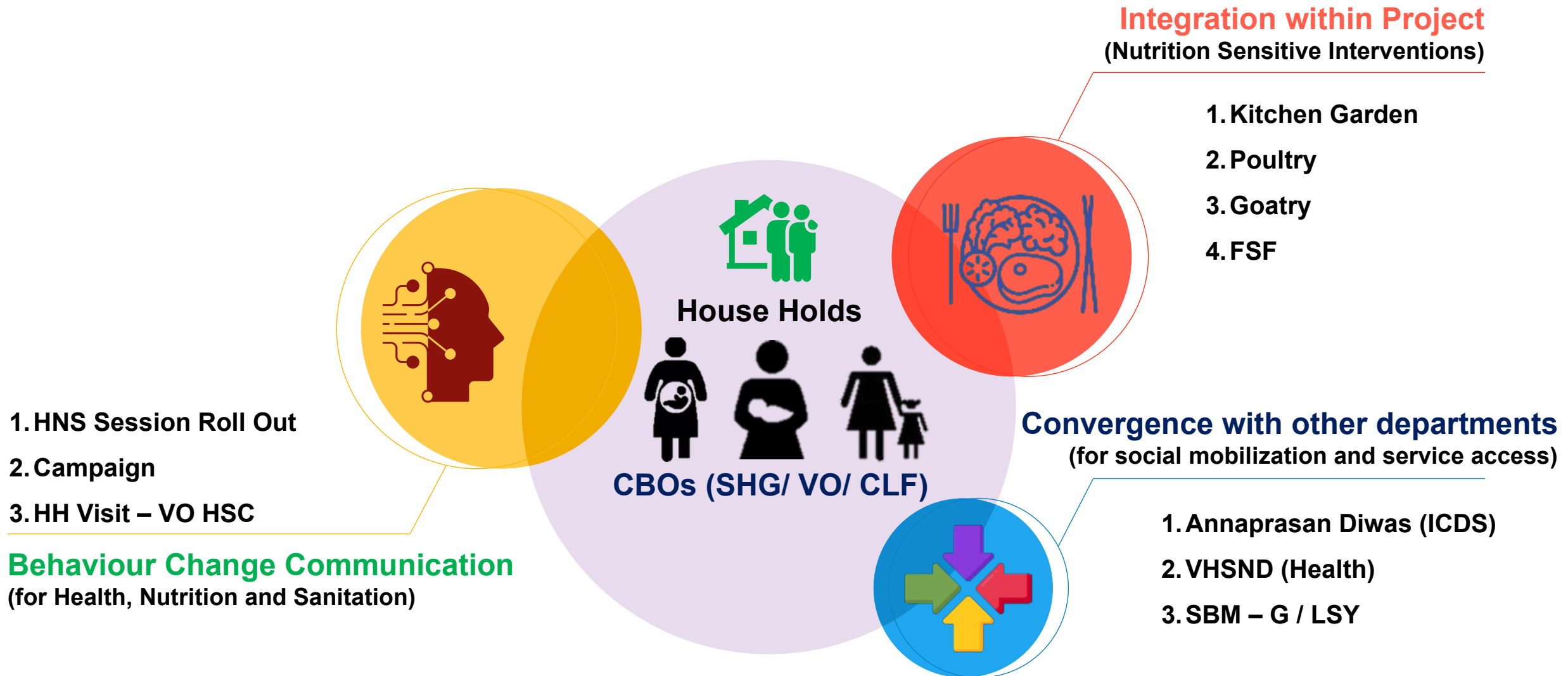


Jobs & Skill Development

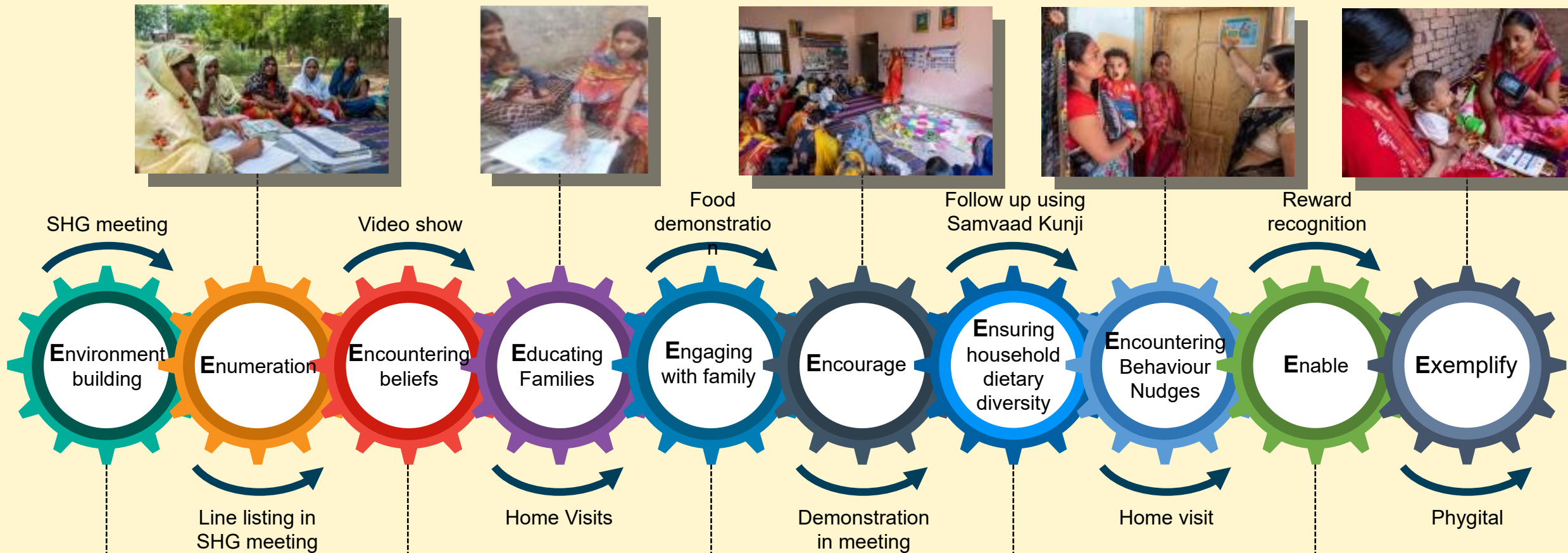


Social Development

HNS strategy has 3 major components focused on Mother and Child



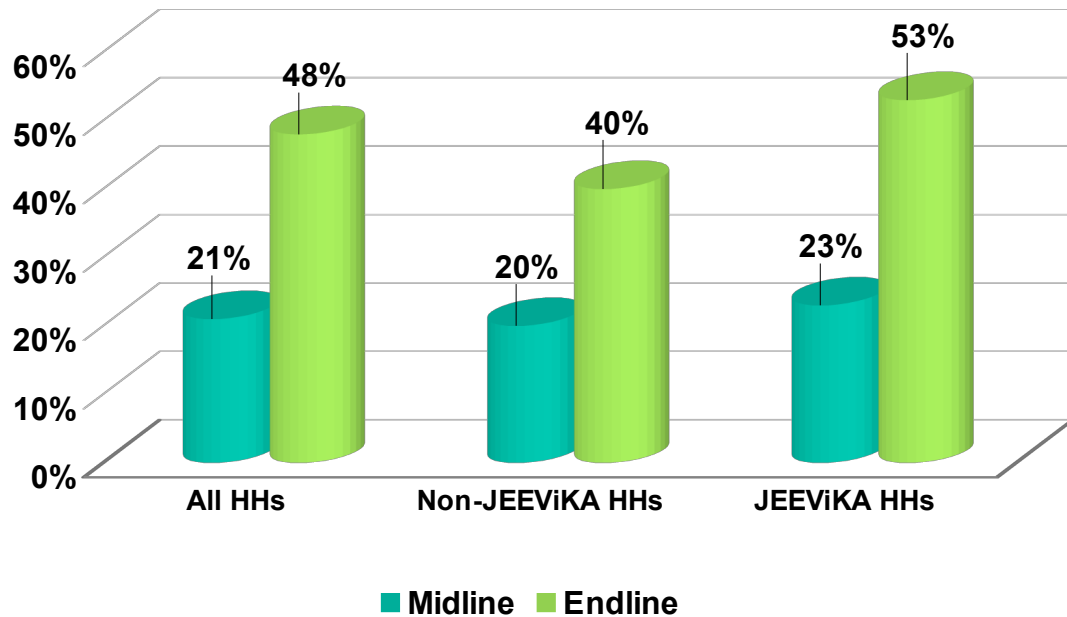
10E - Model



Preliminary findings from the endline survey by AMS

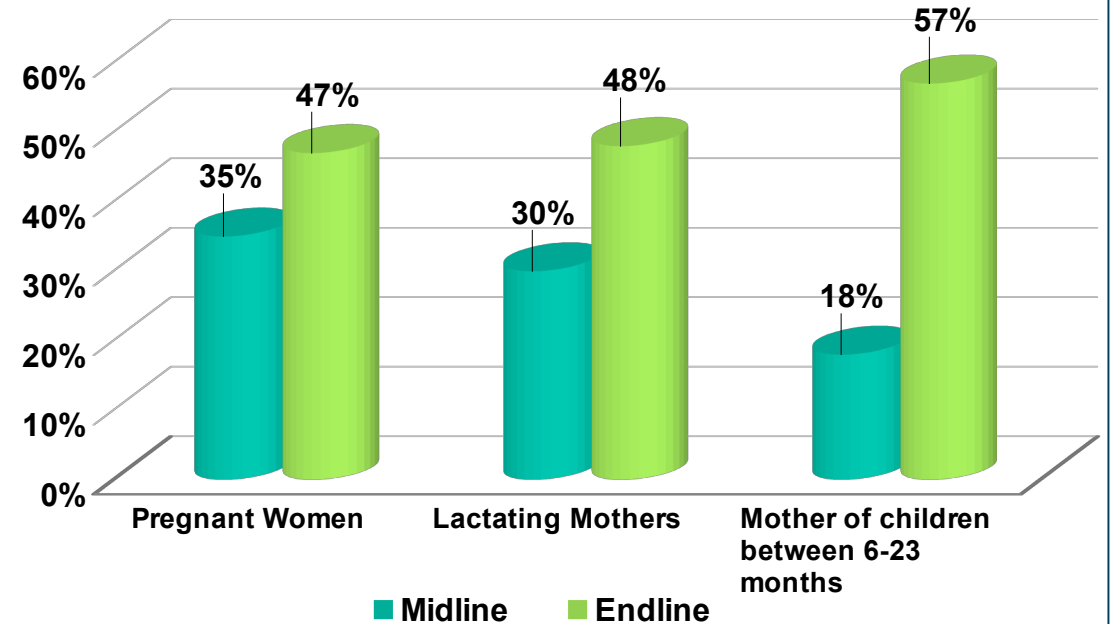
Child dietary diversity

Distribution of Households (%) with Children (6-23 Months) Group demonstrating MDD IYCF (JEEViKA & Non-JEEViKA)



Maternal dietary diversity

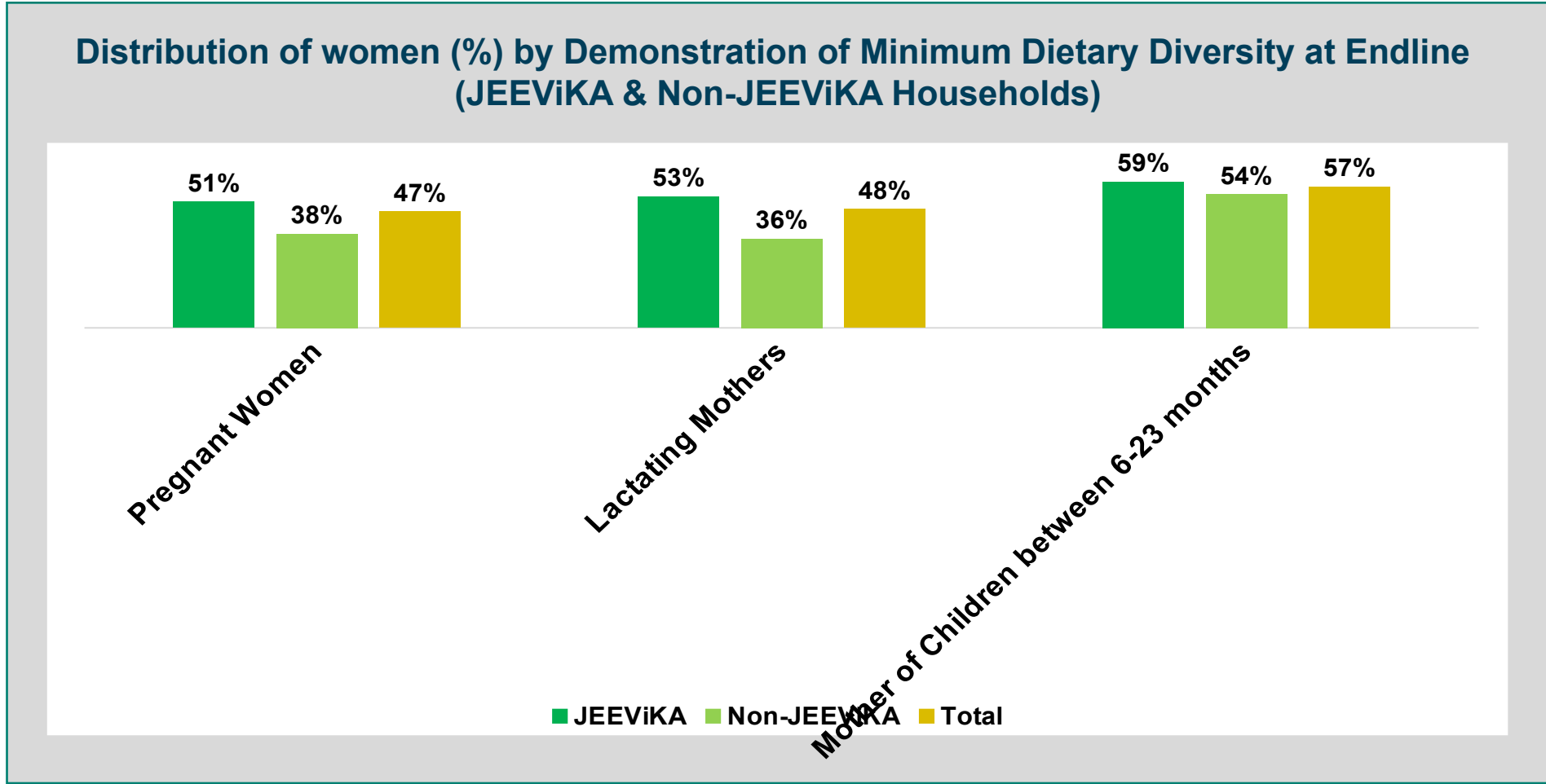
Distribution of women (%) by Demonstration of Minimum Dietary Diversity (Midline & Endline)



Source: Endline Evaluation by AMS

Sample include women from SHG and Non-SHG HHs (Endline-928, Midline-349)

Preliminary findings from the endline survey by AMS



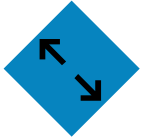
Source: Endline Evaluation by AMS

Implications



Extensive reach of SHG platform and enabling environment of women's collective platform.

~8.3 million SHGs in India reaching up to 90 million households(approx.) and 450 million rural population of India.



Opportunity to scale up the learnings from BRLPS.



Many SRLMs are now **adopting the JEEViKA model for FNHW activities.**



Women collectives can easily **improve the desired behavior.**



SRLMs are now **focussing awareness generation on Family Planning, neglected tropical diseases (NTDs), and non-communicable diseases (NCDs).**



Women collectives are getting ready for **nutrition-based Nutri-enterprises to generate livelihood along with Nutrition.**



The SHG network is **encouraging the convergence between the line departments.**

Thank you